

Notes:
1. XFMR Primary Side are fly-wire connections
To Do:
1. Update Ai Cout symbol when available
2. Tune Vout Adjustment Values

$N_{pri} : N_{sec1} : N_{sec2} = 10 : 1 : 1$
 $L_m = 200\mu H$
 $L_r = 30\mu H$

18V-22.5V / 13.5A Max

Texas Instruments and/or its licensors do not warrant the accuracy or completeness of this specification or any information contained therein. Texas Instruments and/or its licensors do not warrant that this design will meet the specifications, will be suitable for your application or fit for any particular purpose, or will operate in an implementation. Texas Instruments and/or its licensors do not warrant that the design is production worthy. You should completely validate and test your design implementation to confirm the system functionality for your application.

Orderable: ChangeMe in variant	Designed for: Public Release	Mod. Date: 10/24/2023
TID #: N/A	Project Title: Change in menu Project	Project Options: Parameter
Number: XXX###	Rev: E1	Sheet Title:
SVN Rev: Not in version control	Assembly Variant: 001	Sheet: 2 of 4
Drawn By:	File: PMP23428_LLC_Backlight.SchDoc	Size: B
Engineer: Enter name of project lead	Contact: http://www.ti.com/support	

To Do:
1. Update Cr symbol when available
2. Update Ai Cout symbol when available

Notes:
1. XFMR Primary Side are fly-wire connections

$$N_{pri1} : N_{pri2} : N_{sec1} : N_{sec2} : N_{sec3} : N_{sec4} = 15 : 2 : 1 : 1 : 1 : 1$$

$$L_m = 250\mu H$$

$$L_r = 30\mu H$$

A

B

C

D

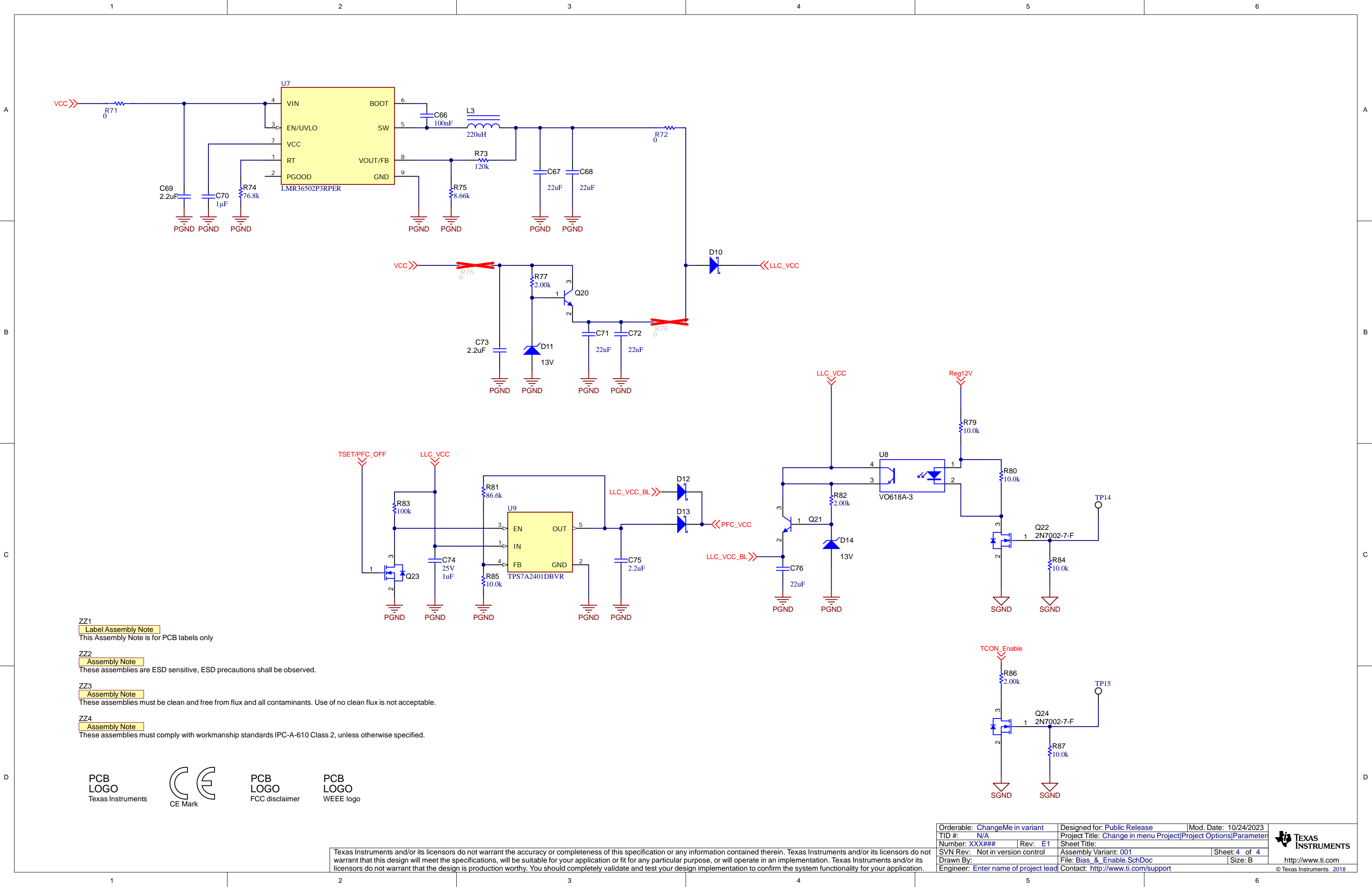
A

B

C

D

Orderable: ChangeMe in variant	Designed for: Public Release	Mod. Date: 10/24/2023
TID #: N/A	Project Title: Change in menu Project	Project Options/Parameter
Number: XXX###	Rev: E1	Sheet Title:
SVN Rev: Not in version control	Assembly Variant: 001	Sheet: 3 of 4
Drawn By:	File: PMP23428_WLLC.SchDoc	Size: B
Engineer: Enter name of project lead	Contact: http://www.ti.com/support	



ZZ1
Label Assembly Note
This Assembly Note is for PCB labels only

ZZ2
Assembly Note
These assemblies are ESD sensitive, ESD precautions shall be observed.

ZZ3
Assembly Note
These assemblies must be clean and free from flux and all contaminants. Use of no clean flux is not acceptable.

ZZ4
Assembly Note
These assemblies must comply with workmanship standards IPC-A-610 Class 2, unless otherwise specified.



Orderable: ChangeMe in variant	Designed for: Public Release	Mod. Date: 10/24/2023
TID #: N/A	Project Title: Change in menu Project	Project Options: Parameter
Number: XXX###	Rev: E1	Sheet Title:
SVN Rev: Not in version control	Assembly Variant: 001	Sheet: 4 of 4
Drawn By:	File: Bias & Enable.SchDoc	Size: B
Engineer: Enter name of project lead	Contact: http://www.ti.com/support	

Texas Instruments and/or its licensors do not warrant the accuracy or completeness of this specification or any information contained therein. Texas Instruments and/or its licensors do not warrant that this design will meet the specifications, will be suitable for your application or fit for any particular purpose, or will operate in an implementation. Texas Instruments and/or its licensors do not warrant that the design is production worthy. You should completely validate and test your design implementation to confirm the system functionality for your application.